



Influence - Company les Invendus

Technical Sheet & Hosting Requirements

Indoor

Technical contacts:

ROYER Yoann : +33 6 69 12 34 25 royeryoann.pro@gmail.com (Technical Director & Tour Manager)

SALAUN Maxime : +33 6 71 66 94 43 maxime.technique3@gmail.com (Tour Technician)

Show duration: 45 minutes

Capacity: 800 people (depending on hosting conditions)

HOSTING CONDITIONS

- Setup time & performers' warm-up: 8 hours with pre-light and sound setup.
- The team includes 3 people: 2 performers and 1 technical manager.
- If accommodation is provided: 3 single rooms required.
- No specific dietary restrictions.

STAGE

- Minimum dimensions: Width 8m ; Depth 8m ; Height 5m minimum
- Floor: Black dance mat
- Backdrop: Black
- Black box in Italian style

PROPS

Holi powder*, brown leather bag, juggling balls, mirror ball, apples

*Due to the use of Holi powder, stage cleaning after the show is required: vacuum cleaner + floor scrubber.

- If another company is scheduled after us, allow 1 hour between shows for cleaning.
- If technical equipment is present in the wings (e.g., amp racks, electrical panels, lighting baskets), protect it with cotton cloth or tarp.
- Ensure the audience does not enter the stage after the show.

SOUND

- A sound system adapted to the venue (e.g., L.A, Adamson, DnB)
- 4 monitor speakers on stands placed in the wings at each corner of the stage
- 1 mixing console with stereo aux sends (Stage Left / Stage Right)
- L/R XLR for sound output (via sound card)
- 31-band EQs for each output (FOH + monitors)

Sound power supply must be separate and protected from lighting.

LIGHTING : *For adaptation, please provide a floor plan of the venue.*

Fixtures list: 51 traditional circuits

- 18x PAR64 CP62
- 6x PAR LED RUSH ZOOM
- 22x PC 1Kw
- 7x PC 2Kw
- 2x 613SX
- 1x 713SX
- 1x 714SX
- 2x Caméo Q-Spot 40w (provided)
- Moteur boule à facettes (provided)

Required equipment:

- 2x 2m stands
- 2x 1.3m stands
- 12x floor plates
- 1 dimmable house light
- Lighting control: Enttec box + laptop (provided)

COPYRIGHTS

- This show is registered with SACD (French authors' rights organization).

DRESSING ROOMS

- Provide equipped dressing rooms with a clothes rack and hangers for 2 performers
- 2 towels and accessible shower after the performance
- Trash bag for dirty costumes
- Laundry service for costumes must be arranged
- Drinks: bottled water (on stage & backstage), fruit juice, tea, coffee – organic preferred
Snacks: fruit, chocolate, cookies are welcome

STAFFING / TIMING

- Sound setup and checks: 1h
- Lighting setup and programming: 5h
- 1 in-house technician required
- Performers' warm-up on stage: 1h30
- **Post-show cleaning: 1h with vacuum cleaner and floor scrubber**

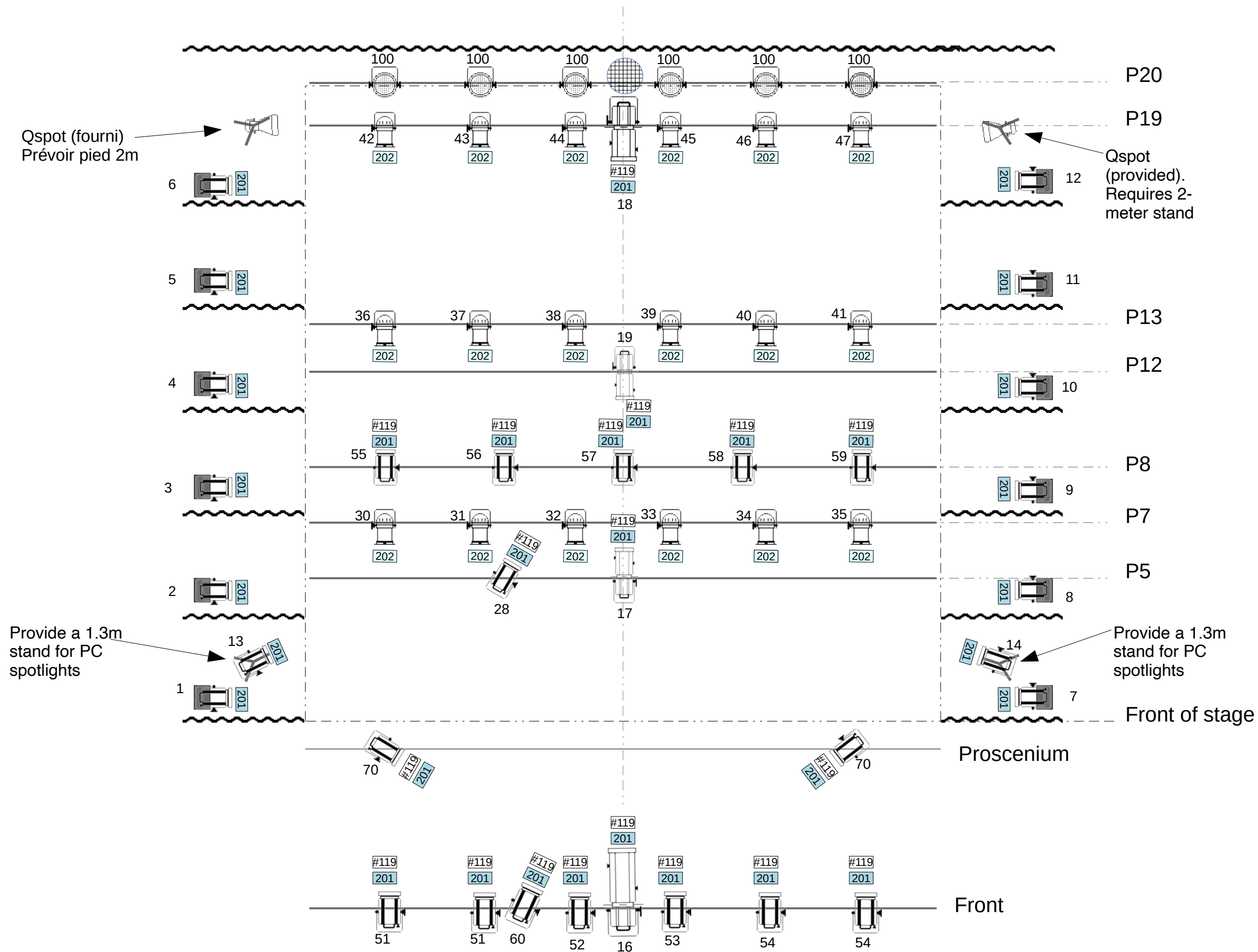
This service proposal must be discussed with our technical director and can be adapted depending on the host venue's workflow.

This technical sheet is an integral part of the contract.

LIGHTING PLOT – INDOOR ‘INFLUENCE’

CIE LES INVENDUS

05/2024



LEGEND

PAR64 1kw CP62

RUSH PAR LED

PC 2kw (front)

PC 1kw

profile spotlight 1kw type 613
(17 et 19)

profile spotlight 2kw type 713
(18)

profile spotlight 2kw type 714
(16)

LED Qspot (provided)
(Requires 3-pin DMX)

1kW PC on floor base

Note

- Vertical boom for PARs

- Cable run in appendix –
Mirror ball motor (provide
power + 3-pin DMX)

- House lighting must
be dimmable.

Technical Manager
Yoann ROYER
+33 6 69 12 34 25
royer.yoann.pro@gmail.com

APPENDIX – MEASUREMENTS
'INFLUENCE' - CIE LES INVENDUS

05/2024

